

The logo for AxCient, featuring the word "AxCient" in a blue, sans-serif font. The letter "x" is stylized with a blue arrow pointing to the right, integrated into its design. The logo is positioned on a light green horizontal band.

AxCIENT

Complete Data Protection as a Service





BUSINESSES NEED TO MAXIMIZE PRODUCTIVITY, LOWER COSTS AND DECREASE RISKS EVERY DAY.

In this age of information, this means you need your servers, desktops and applications up and running, all the time.

Each year a business is guaranteed to have many productivity hits whether it is a stolen laptop, a failed email server or an accidentally deleted file or folder. Some incidences are minor and some are major, but one thing is consistent: all of these occurrences negatively affect employees and customers and therefore the bottom line.

According to a recent survey conducted by IDC the average small to midsize U.S. business has a collection of **four or more data protection technologies** in place to help reduce downtime and increase uptime. However, despite throwing people and technology at the problem of downtime, **60% report still having data recovery issues.**




YET 60% STILL REPORT HAVING DATA RECOVERY ISSUES.

Why have companies needed four or more technologies? Because, until now, there **has been no way to protect** the different operating systems (Windows, Mac OSX, Linux), critical applications (Exchange Server, SQL Server, Other) and (Laptop, Desktop Server) without cobbling together various solutions from different vendors. With this complexity, it is not shocking to know that over 60% of businesses fail to protect themselves properly.

Now there is a way to recover quickly from any data loss or server outage and it's all delivered as **One Solution, from One Vendor, as A Service**. The most reliable backup and business continuity service for your business makes it simple.

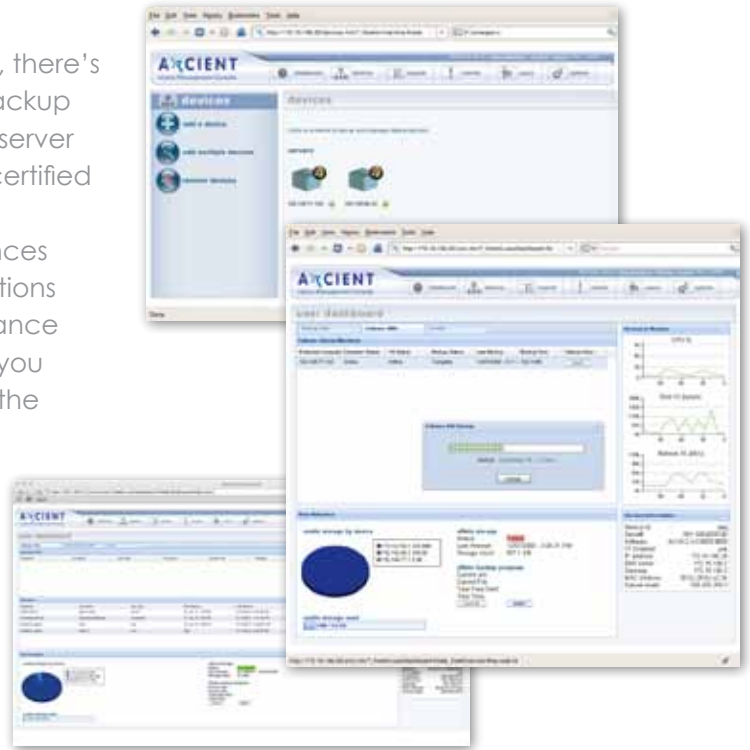
Axcient offers the first complete data protection service for small and medium business (SMB) customers designed to ensure business continuity every day and protect your most important asset—data—in the event of loss or corruption. With just a simple click, the Axcient solution lets you restore lost data in minutes, not days, weeks or even months like other solutions.

The traditional Method of Business Operations: Complexity

	Backup	Business Continuity	Disaster Recovery Copy
What?	<ul style="list-style-type: none"> Application data and files copied 	<ul style="list-style-type: none"> Entire machine image copied 	<ul style="list-style-type: none"> All data sent offsite
Why?	<ul style="list-style-type: none"> Lost or corrupted data can be recovered 	<ul style="list-style-type: none"> An inoperable machine can be transferred and brought online 	<ul style="list-style-type: none"> Recover even after fire, flood, theft, sabotage or the backup becomes corrupted
Required!	<ul style="list-style-type: none"> Software on each server Software on each desktop Backup server 	<ul style="list-style-type: none"> Software on each server Software on each desktop Backup server Spare server to restore to 	<ul style="list-style-type: none"> Tape machine and media FedEx or other Vaulting facility or Internet-based service
			

With Axcient, you are protected three ways: First, there's a device that stays in your workplace for FAST backup and restores. Second, a copy of your data and server images are stored at Axcient's secure, SAS 70 II certified data center – automatically sent on a schedule that is preset. Third, all Axcient Appliances are built with special chipsets to allow the operations of a failed server to failover to the Axcient Appliance until a server replacement is found. That's right, you can run your Microsoft Exchange server right on the Appliance in a pinch.

Whether the service is managed by a Best In Class Axcient-enabled Managed Service Provider (MSP) or an IT Administrator, everything is a click away through Axcient's integrated, elegant web browser view.



The Axcient Solution

comes from One Vendor, complete data protection, delivered as a service



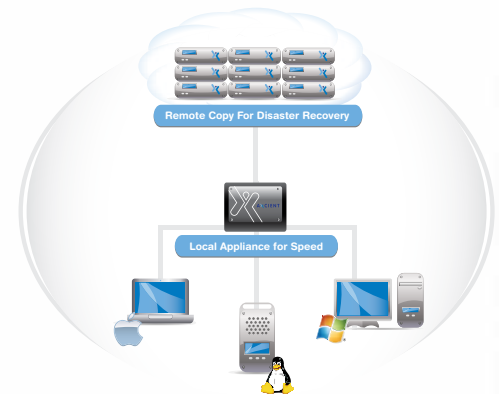
Complete Data Protection = Backup + Disaster Recovery + Business Continuity = Axcient

Axcient offers the most complete range of data protection and business continuity services for the SMB:

Package	Backup	Protect	Fortify	Fortify-X
	Local Backup, Remote Disaster Recovery	Backup plus Advanced Application Support	Protect plus Business Continuity	Fortify plus Expanded Business Continuity
Local Data Protection				
Optimized On-Premise Appliance	✕	✕	✕	✕
Agentless Installation	✕	✕	✕	✕
Rapid Backup and Restore	✕	✕	✕	✕
Retained Incremental Backups	✕	✕	✕	✕
Windows, Linux, and MacOS Protected	✕	✕	✕	✕
VMware and Hyper-V Protected	✕	✕	✕	✕
Disaster Recovery				
Flexible Offsite Replication to SAS 70 Type II Datacenter	✕	✕	✕	✕
Services and Support				
US-Based Technical Support	✕	✕	✕	✕
Appliance Replacement Service	✕	✕	✕	✕
Appliance Firmware Updates	✕	✕	✕	✕
Initial Offsite Seeding Support (Shipping Charges Apply)		✕	✕	✕
Advanced Application Support				
Microsoft Applications Support (Exchange, Active Directory, SQL, and SharePoint)		✕	✕	✕
Brick Level Exchange Recovery (Mailbox, Message, Contact, ...)		✕	✕	✕
Business Continuity				
Local Failover for Windows Servers			✕	✕
Bare Metal Restore for Windows Servers and Workstations			✕	✕
Expanded Business Continuity Capacity				✕

Data Backup Services with RapidRestore™

- Backup and restore data from Windows, Linux and Mac OSX machines
- Continuous protection of desktops, laptops, and servers
- End user or administrator driven data recovery
- Fast, network-speed recovery times from the local Axcient Appliance (RTO)
- Restore a whole volume or a specific file, email, or folder
- Brick-level restore of Microsoft Exchange and advanced Microsoft SQL Server support
- Customizable scheduling
- Customizable point-in-time restore interval enables recovery point objectives (RPO)
- Open file backup
- Active directory backup



Business Continuity Services with ServerAlive™

- Configurable frequency of disk image versioning
- Create complete server or desktop disk images to restore to different hardware, saving critical time
- Failover a physical or virtual Windows 2003 or 2008 server to the Axcient Appliance in the event of an outage and continue as usual
- Fail back to the replacement server

Disaster Recovery Services with SmartCloudDR™

- Set and forget on an automated schedule to save a copy of your data offsite
- No more making, shipping or storing tapes
- Protects from fire, theft, sabotage and natural disaster
- Data is encrypted at one of Axcient's SAS 70 II data centers in North America or Europe
- In the event of a site failure, a new, fully replicated Axcient Appliance is sent over night
- Configurable point-in-time restore enables recovery point objectives (RPO) to be met



Appliance Specifications

Axcient's Advanced Application Support and Basic or Expanded Business Continuity Services can be activated on any Axcient Backup and Disaster Recovery platform.

CAPACITY

MODEL	A20-T	A20-TE	A20-R	A20-RE
Storage	250 GB - 6 TB	250 GB - 6 TB	250 GB - 6 TB	1 TB - 20 TB
Protected devices	unlimited	unlimited	unlimited	unlimited
Server & workstation image protection	0	8	8	18
Server failover	0	3	3	7

HARDWARE CONFIGURATION

Processor (VT-enabled)	Intel i3-530 dual core	Intel x3440 quad core	Intel x3440 quad core	2x Intel E5620 quad core
Memory	4 GB	8 GB	12 GB	24 GB
RAID	Software RAID-1 (2 drive configs) or RAID-5 (3+ drive configs)	Software RAID-1 (2 drive configs) or RAID-5 (3+ drive configs)	Software RAID-1 (2 drive configs) or RAID-5 (3+ drive configs)	Software RAID-1 (2 drive configs) or RAID-5 (3+ drive configs)
Disk drives	Non-hot Plug	Non-hot Plug	Hot Plug	Hot Plug
10/100/1000 ethernet	2 ports	2 ports	2 ports	4 ports
Power supply	Non-hot Plug	Non-hot Plug	Hot Plug	Hot Plug

FORM FACTOR

Chassis	Tower	Tower	Rack 1U	Rack 2U
Dimensions (W x D x H)	6.9" x 16.8" x 14.4" (17.5 x 42.6 x 36.5 cm)	6.9" x 16.8" x 14.4" (17.5 x 42.6 x 36.5 cm)	17.6" x 27.6" x 1.7" (44.8 x 70.0 x 4.3 cm)	17.6" x 28.2" x 3.5" (44.8 x 71.7 x 8.8 cm)
Weight	25.1 - 30.5 lbs (11.4 - 13.8 kg)	25.1 - 30.5 lbs (11.4 - 13.9 kg)	28.2 - 31.5 lbs (12.8 - 14.3 kg)	32.0 - 45.0 lbs (11.9 - 16.8 kg)
Power rating	120/240 VAC 300 W	120/240 VAC 300 W	120/240 VAC 400 W	120/240 VAC 750 W

A smiling man in a blue shirt and striped tie sitting in an office. The background is blurred, showing other people in business attire.

**AXCIENT'S COMPLETE DATA PROTECTION
PLATFORM IS DELIVERED AS A SERVICE,
AND THERE IS NO NEED TO BUY
ANY EQUIPMENT TO GET STARTED.**

**HOW IS THAT FOR CHANGING THE UPTIME
GAME FOR BUSINESSES?**

AXCIENT



All Your Data, All The Time.™

Axcient, Incorporated

2761 Marine Way
Mountain View, CA 94043
Phone: 800-715-2339
Fax: 650-897-9877

www.axcient.com